

For Immediate Release | January 8, 2021

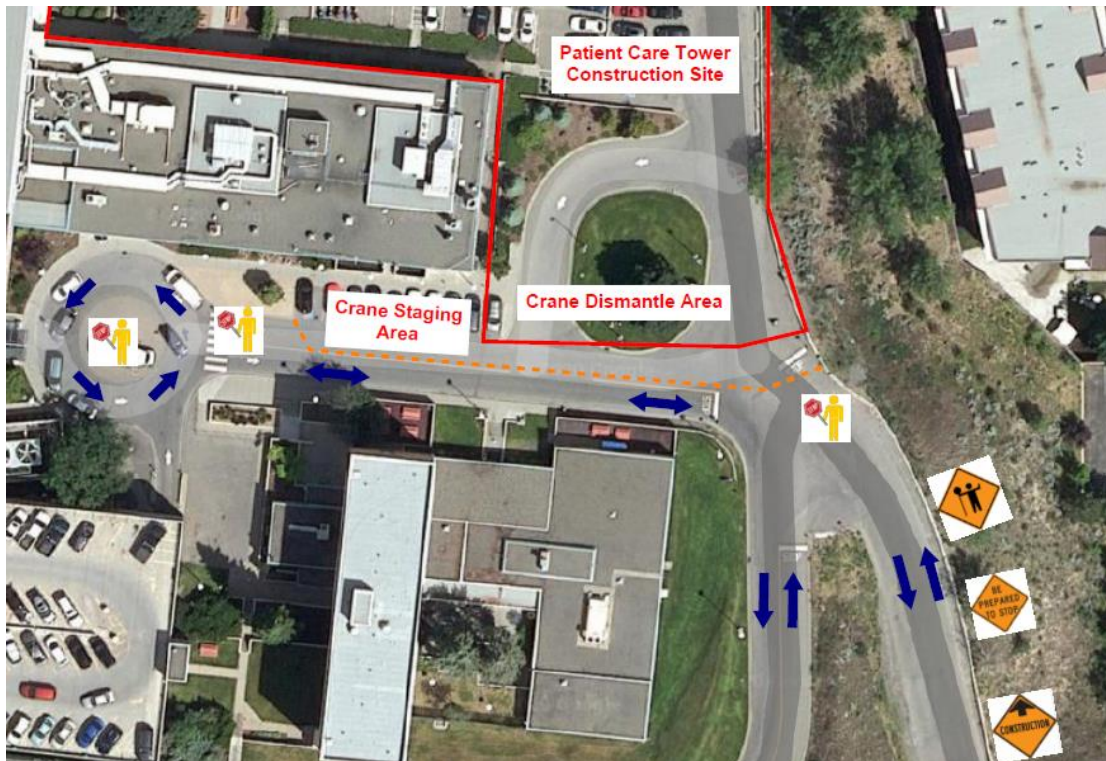
Temporary impact to patient drop-off area at Royal Inland Hospital

KAMLOOPS – As part of the ongoing construction of the Royal Inland Hospital (RIH) Patient Care Tower the flow of traffic for patients will be temporarily impacted from Jan. 11 to 17, 2021.

During this time, the Ring Road leading to the patient drop-off roundabout will be down to single-lane traffic to allow for EllisDon to dismantle the two cranes on the construction site. The short-term parking spaces near the roundabout will also be closed.

Mobility restricted and physician parking at Ponderosa Lodge will also be impacted allowing for the crane located next to Ponderosa Lodge to be dismantled. Signage will be in place and traffic control flaggers will be at both locations to assist the flow of traffic.

There will be no change in access to the public parkade at the Clinical Services Building or for over-height parking. The work will take place between 7 a.m. and 7 p.m. each day and is expected to be completed by Jan. 17, 2021. Interior Health regrets any inconvenience to patients during this time.



-30-

Media, for information:

Media@interiorhealth.ca

1-844-469-7077

www.interiorhealth.ca

PUBLIC SERVICE ANNOUNCEMENT